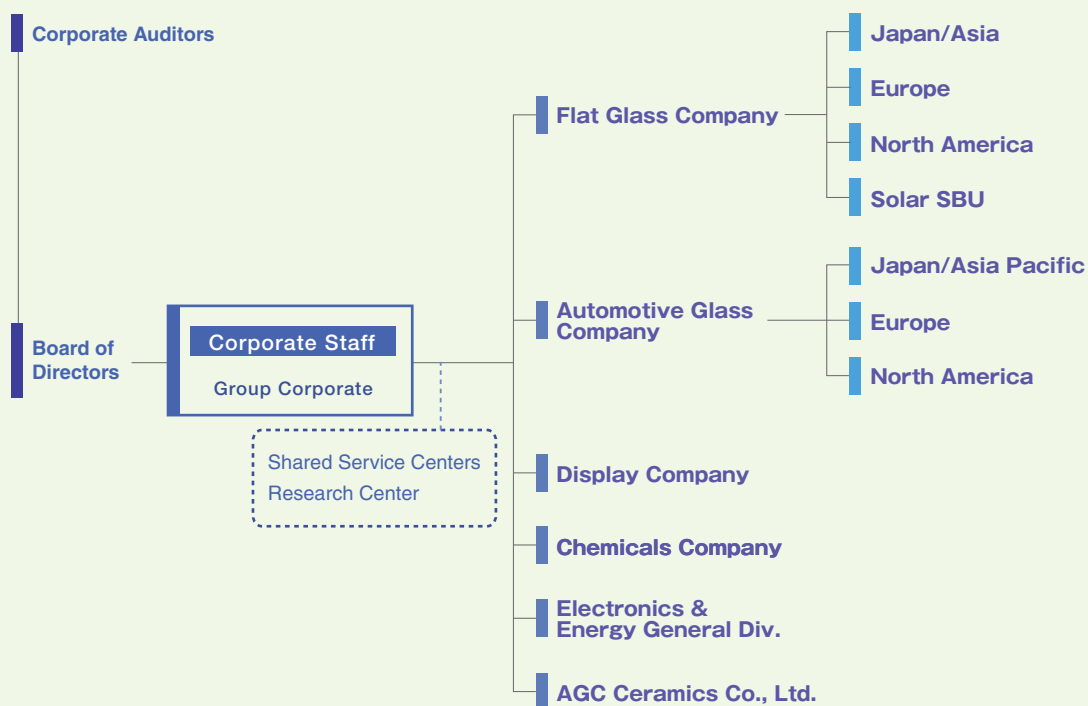


Corporate Data

Name	Asahi Glass Company, Limited
Head Office	1-12-1, Yurakucho, Chiyoda-ku, Tokyo 100-8405 JAPAN
Founded	September 8, 1907
Incorporated	June 1, 1950
Capital	90,859 million yen
Outstanding stock	1,186,682,105 shares
Employees	49,710 (consolidated) 5,840 (non-consolidated)

As of end of December 2007

Organization Data



As of end of March 2008